

PERFORMER SUITE

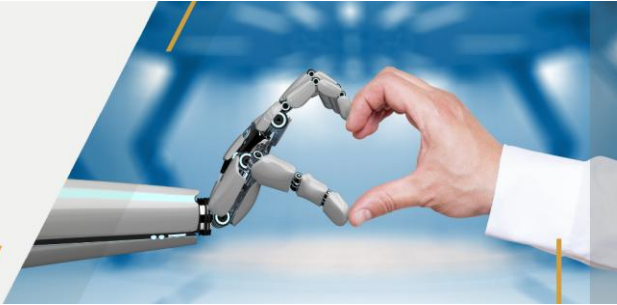
SAP BW/4HANA Role – Documentation & Analysis

SCENARIO VERSION 25.1

SETTINGS VARIANT SCE ROLE DOCU

RESPONSIBLE PERSON ALEXANDER LUDWIG

CREATION DATE 20.08.2025



PERFORMER SUITE

Role Z_ROLE_PS_DP_SYSC_BW4, Client 001

Table of contents

1	Comment: Z_ROLE_PS_DP_SYSC_BW4/001 - Role for Docu Performer and System Scout in BW (PS)	3
1.1	Objective	3
2	General Information	3
3	Role menu	3
4	Authorization data	3
4.1	AAAB - Cross-application Authorization Objects	3
4.2	BC_A - Basis: Administration	4
4.3	BC_C - Basis - Development Environment	5
4.4	RS - SAP BW/4HANA	6

1 **Comment: Z_ROLE_PS_DP_SYSC_BW4/001 - Role for Docu Performer and System Scout in BW (PS)**

1.1 Objective

The authorizations of this role are required to use all functions from the products **Docu Performer** and **System Scout** of the Performer Suite.

Keep in mind, the role must also have the correct Function Modules and Function Group authorizations (depending on your prefix used).

2 General Information

System	A4H
Role	Z_ROLE_PS_DP_SYSC_BW4/001, Role for Docu Performer and System Scout in BW (PS)
Derived from Role	-
Related Single Roles	-
Profile name	T-AH320006
Profile text	Profile for role Z_ROLE_PS_DP_SYSC_BW4
Status	Authorization profile is generated
Last Changed By	AKOLMOG
Last change (timestamp)	6/23/2025 2:16:39 PM
Timestamp of documentation	8/20/2025 9:03:39 AM

3 Role menu

The role has no menu.


4 Authorization data

4.1 AAAB - Cross-application Authorization Objects

 S_RFC - Authorization Check for RFC Access [T-AH32000600]

Authorizations field	Values
ACTVT	16 Execute
RFC_NAME	/SDF/HANA_TABLE_SIZE, AUTHORITY_CHECK, BAPI_IJOB_ACTIVATE_MULTIPLE, BAPI_IJOB_GETDETAIL, BAPI_IJOB_GETLIST, BDL_GET_GREENWICH_TIME, BDL5, BX_AGR_READ_ALL_NODES, DDIF_FIELDINFO_GET, EM_GET_NUMBER_OF_ENTRIES, FUNCTION_EXISTS, FUNCTION_IMPORT_INTERFACE, ME_GET_CURRENT_USER_ID, RFC_GET_FUNCTION_INTERFACE, RFC_GET_NAMETAB, RFC_GET_SYSTEM_INFO, RFC_READ_TABLE, RFC_SYSTEM_INFO, RFC1, RFCPING, RPY_INCLUDE_UPDATE, RPY_PROGRAM_READ, RS_VARIANT_CONTENTS_RFC, RSAB, RSNDL_IJOB_INFO_GET, RSOBJS_GET_NODES_X, RSPC_API_PROCESS_GET_INFO, RSPC_RUNTIME_ANALYSIS, RSPLS_ALVL_GETDETAIL, RSPLSIP_INFOPROV_GETDETAIL, RSZ_X_COMPONENT_GET, RSZ_X_INFO_OBJECTS_GET, RSZ_X_QUERY_CHECK, RSZ_X_QUERY_GET, RSZ_X_WHERE_USED_LIST_GET, SDIFRUNTIME, SDTX, SIFP, SYST, USER_NAME_GET, <name you have given to the function group> , <used prefix>_RFC_ADSO_GETDTL_XML, <used prefix>_RFC_AUTH_CHECK, <used prefix>_RFC_CODESCAN, <used prefix>_RFC_GET_DTP_DETAILS, <used prefix>_RFC_GET_STRING, <used prefix>_RFC_READ_REPORT, <used prefix>_RFC_USAGE_ANALYSIS
RFC_TYPE	FUGR, FUNC

4.2 BC_A - Basis: Administration

 S_TABU_DIS - Table Maintenance (using standard tools such as SM30) [T-AH32000600]

Authorizations field	Values
ACTVT	03 Show
DICBERCLS	ACM_USED_AUT_O, ADRP, AGR_1016, AGR_1250, AGR_1251, AGR_AGRS, AGR_DEFINE, AGR_HIER, AGR_PROF, AGR_TEXTS, AGR_USERS, CVERS, DD02L, DD02T, DD03L, DD03ND, DD04T, DD07T, DD08B, DD09L, DD10B, DD25L, DD26S, DD27S, DD28S, DDDDLSRC, DDDDLSRC02BT, DDDDLSRCT, DDFIELDANNO, DDLDEPENDENCY, DDPARAMETERANN, DEVACCESS, DOKTL, E070, E070V, E071, ENLFDIR, FUNCT, FUPARAREF, INFO_FUGRT, INFO_FUNCT, PROGDIR, RODELTAMT, ROOSOURCE, RS2HANA_V_STAT, RSAABAP, RSAOOBJ, RSAOOBJT, RSAOOBJXREF, RSAPPL, RSAPPLT, RSAROUTT, RSBASIDOC, RSBATCHPARALLE, RSBDBTAB, RSBFILE, RSBKDTP, RSBKDTPSTAT, RSBKDTP, RSBHDEST, RSBHDESTT, RSBHDESTVAR, RSBHFIELDS, RSBHFIELDST, RSBPOKE, RSBPOKEFIELDS, RSBPOKESELSET, RSBPOKET, RSCOMPTLOGOT, RSCURTRT, RSCURTXT, RSDADAP, RSDADAPDOK, RSDADAPLOC, RSDADAPSEL, RSDADAPT, RSDAREA, RSDAREAT, RSDAREAV, RSDATRNAV, RSDATRNAVT, RSDBCHATR, RSDCHA, RSDCHABAS, RSDDPA, RSDDSTAT_OLAP, RSDFDMOD, RSDFDMODT, RSDIOBJ, RSDIOBJCMP, RSDIOBJT, RSDIPROV_MAPPI, RSDKYF, RSDS, RSDSACCESSATTR, RSDSACCESSTYPE, RSDSEXTOBJ, RSDSSEGFDT, RSDSSEGFDT, RSDSSEGT, RSDST, RSDSTS, RSDTIM, RSDUNI, RSDVCHA, RSDVTIM, RSDVUNI, RSECBAU, RSECBAUPROP, RSECHIE, RSECHIE_STRING, RSECTXT, RSECUSERAUTH, RSECVAL, RSECVAL_STRING, RSFBP, RSFBPFIELD, RSFBPNAVATRT, RSFBPSOURCE, RSFBPT, RSFOBUEV001, RSHIEDIR, RSHIEDIRT, RSIS, RSIST, RSKSFIELDNEW, RSKSFIELDNEWT, RSKSNEW, RSKSNEWT, RSLOGSYSDB, RSNSPACE, RSOADSO, RSOADSOT, RSOHCPR, RSOHCPRT, RSOLTPSOURCEFI, RSOOBJXREF, RSOTLOGOHISTOR, RSPCCHAIN, RSPCCHAINATTR, RSPCCHAINT, RSPCLOGCHAIN, RSPCTRIGGER, RSPCVARIANT, RSPCVARIANTT, RSPLF_SRV, RSPLF_SRV_COND, RSPLF_SRV_CU, RSPLF_SRV_P, RSPLF_SRV_PS, RSPLF_SRV_T, RSPLF_SRVTYPE, RSPLF_SRVTYPE, RSPLS_ALVL, RSPLS_ALVL_IJOB, RSPLS_ALVL, RSPLS_CR_PROP, RSPLS_CR_RANGE, RSPLS_CR_ROLE, RSPLS_CR_STEPS, RSPLS_DS, RSPLS_DS_FIELD, RSPLS_DS_RANGE, RSPLS_DST, RSPLS_SEQUENCE, RSPMREQUEST, RSPROCESSTYPES, RSPSPACE, RSREQDONE, RSRRENDERERV, RSRREPRDIR, RSSDBATCH, RSTRAN, RSTRANFIELD, RSTRANFIELDPRO, RSTRANGROUP, RSTRANROUTMAP, RSTRANRULE, RSTRANRULESTEP, RSTRANRULET, RSTRANSCRIPT, RSTRANSTEPADSO, RSTRANSTEPNCST, RSTRANSTEPMAP, RSTRANSTEPMAST, RSTRANSTEPPODSO, RSTRANSTEPROUT, RSTRANSTEPSCRI, RSTRANSTEPUNIT, RSTRANT, RSUOMT, RSZCALC, RSZCOMPDIR, RSZCOMPIC, RSZELTDIR, RSZELTPROP, RSZELTTXT, RSZELTXREF, RSZGLOBV, RSZRANGE, RSZSELECT, RSZWBITMHEADTX, RSZWBTMPHEADTX, RSZWTEMPLATEDA, SEOCCLASS, SEOCCLASSDF, SEOCCLASS, SEOCOMPO, SEOCOMPODF, SEOCOMPOTX, SEOFRIENDS, SEOMETAREL, SEOREDEF, SEOSUBCODF, SEOSUBCOTX, SMIMLOIO, SVERS, T002, T002C, T002T, T002TX, T002XT, T006, T006A, TADIR, TBTCT, TBTCP, TCURC, TCURR, TCURT, TCURV, TCURW, TDDAT, TFDIR, TFTIT, TLIBG, TMCEXCFS, TMDIR, TOBCT, TOBJ, TOBJT, TRDIR, TRDIRT, UCF001C, UCF001G, UCF001T, UCF0021, UCF005T, UCF2110, UCF211T, UCF220C, UCF220T, UCF221T, UCF222T, UCF223T, UCF224C, UCF224T, UCF700T, UCF7100, UCF7300, UCF7400, UCF7410, UCF7500, UCFE01C, UCFE01T, UCFT000, UCFT001, UCFT002, UCFV000, UCM003C, UCM003T, UCS000T, UCS0100, UCS0101, UCS0104, UCS0105, UCS0106, UCS0107, UCS0108, UCS0109, UCS010C, UCS010S, UCS010T, UCS01A0, UCS01A2, UCT2010, UCT3000, UCT4000, UGMD2006, UGMD300C, UGMD300T, URL_EXTXT, USER_ADDRP, USR01, USR21, V_CMP_JOIN, V_COMPDIR_COMP, V_COMPDIR_ELTD, V_ELTDIR_TXT, V_REP_JOIN, VARIT, VSEOCCLASS, WDY_APP_PROP_D, WDY_APP_PROPER, WDY_APPLICATION, WDY_CHIP_DEF, WDY_CHIP_DEFT, WDY_CHIP_PARAM, WDY_CHIP_PORT, WDY_CHIP_PORTT, WDY_CHIP_TAG, WDY_COMPO_USAG, WDY_COMPONENT, WDY_COMPONENTT, WDY_CONFIG_DAT, WDY_CONTROLLER, WDY_CTLR_COMPO, WDY_CTLR_EXC, WDY_CTLR_EXCT, WDY_CTLR_PARAM, WDY_CTLR_USAG, WDY_CTX_ATTRIB, WDY_CTX_NODE, WDY_INTF_IMPLE, WDY_IJOBUND_PL, WDY_PLUG_PARAM, WDY_VIEW, Y*, Z*, Customer-Specific Tables

 S_TABU_NAM - Table Access by Generic Standard Tools [T-AH32000600]

Authorizations field	Values
ACTVT	03 Show
TABLE	ACM_USED_AUT_O, ACMDCLSRC, ACMDCLSRCT, ADRP, AGR_1016, AGR_1250, AGR_1251, AGR_1252, AGR_AGRS, AGR_DEFINE, AGR_HIER, AGR_PROF, AGR_TEXTS, AGR_USERS, CVERS, DD02L, DD02T, DD03L, DD03ND, DD03T, DD04T,

Authorizations field	Values
	DD07T, DD08B, DD09L, DD10B, DD25L, DD26S, DD27M, DD27S, DD28S, DDDDLSRC, DDDDL SRC02BT, DDDL SRC, DDFIELDANNO, DDLDEPENDENCY, DDPARAMETERANNO, DEVACCESS, DOKTL, E070, E070V, E071, E07T, ENLFDIR, FUNCT, FUPARAREF, INFO_FUGRT, INFO_FUNCT, PROGDIR, RODELTAMT, ROOSOURCE, RS2HANA_V_STAT, RSAABAP, RSAOOBJ, RSAOOBJT, RSAOOBJXREF, RSAPPL, RSAPPLT, RSAROUTT, RSBASIDOC, RSATCHPARALLEL, RSBDTAB, RSBFILE, RSBKDT, RSBKDTSTAT, RSBKDTPT, RSBOHDEST, RSBOHDESTT, RSBOHDESTVAR, RSBOHFIELDS, RSBOHFIELDST, RSBSPOKE, RSBSPOKEFIELDS, RSBSPOKESELSET, RSBSPOKET, RSCOMPTLOGOT, RSCURTRT, RSCURTXT, RSDADAP, RSDADAPDOK, RSDADAPLOC, RSDADAPSEL, RSDADAPT, RSDAREA, RSDAREAT, RSDAREAV, RSDATRNAV, RSDATRNAVT, RSDBCHATR, RSDCHA, RSDCHABAS, RSDDPA, RSDDSTAT_OLAP, RSDFDMOD, RSDFDMODT, RSDIOBJ, RSDIOBJCMP, RSDIOBJT, RSDIPROV_MAPPING, RSDKYF, RSDS, RSDSACCESSATTR, RSDSACCESSTYPEST, RSDSEXTOBJ, RSDSSEGF, RSDSSEGFDT, RSDSSEGT, RSDST, RSDSTS, RSDTIM, RSDUNI, RSDVCHA, RSDVTIM, RSDVUNI, RSECBIAU, RSECBIAUPROP, RSECHIE, RSECHIE_STRING, RSECTXT, RSECUSERAUTH, RSECVAL, RSECVAL_STRING, RSFBP, RSFBPCMP, RSFBPFIELD, RSFBPFIELDT, RSFBPNAVATR, RSFBPNAVATRTR, RSFBPSEMANTICS, RSFBPSOURCE, RSFBPSRCTYPEDEFT, RSFBPT, RSFBOUEV001, RSHIEDIR, RSHIEDIRT, RSIS, RSIST, RSKSFIELDNEW, RSKSFIELDNEWT, RSKSNEW, RSKSNEWT, RSLOGSYSDB, RSLOGSYSODP, RSNSPACE, RSOADSO, RSOADSOT, RSOHCPR, RSOHCPT, RSOLTPSOURCECT, RSOOBJXREF, RSOSEGR, RSOSEGR_MEMBER, RSOSEGR, RSOTLOGOHISTORY, RSPCCHAIN, RSPCCHAINATTR, RSPCCHAINT, RSPCLOGCHAIN, RSPCTRIGGER, RSPCVARIANT, RSPCVARIANTT, RSPLF_SRV, RSPLF_SRV_COND, RSPLF_SRV_CU, RSPLF_SRV_P, RSPLF_SRV_PS, RSPLF_SRVT, RSPLF_SRVTYPE, RSPLF_SRVTYPEPET, RSPLS_ALVL, RSPLS_ALVL_IJOB, RSPLS_ALVLT, RSPLS_CR_PROP, RSPLS_CR_RANGE, RSPLS_CR_ROLE, RSPLS_CR_STEPS, RSPLS_DS, RSPLS_DS_FIELD, RSPLS_DS_RANGE, RSPLS_DST, RSPLS_SEQUENCE, RSPLS_SEQUENCE_S, RSPLS_SEQUENCET, RSPMREQUEST, RSPROCESSTYPES, RSPROCESSTYPEST, RSPSPACE, RSREQDONE, RSRENDERERV, RSREPRDIR, RSSDBATCH, RSTRAN, RSTRANFIELD, RSTRANFIELDPROP, RSTRANGROUPT, RSTRANROUTMAP, RSTRANRULE, RSTRANRULESTEP, RSTRANRULET, RSTRANSCRIPT, RSTRANSTEPADSO, RSTRANSTEPCONST, RSTRANSTEPJOB, RSTRANSTEPMAP, RSTRANSTEPMASTER, RSTRANSTEPPODSO, RSTRANSTEPROUT, RSTRANSTEPSCRIPT, RSTRANSTEPUNIT, RSTRANT, RSUOMTXT, RSZCALC, RSZCOMPDIR, RSZCOMPIC, RSZELTDIR, RSZELTPROP, RSZELTTXT, RSZELTXREF, RSZGLOBV, RSZRANGE, RSZSELECT, SEOCCLASS, SEOCCLASSDF, SEOCCLASSX, SEOCOMPO, SEOCOMPODF, SEOCOMPOTX, SEOFRIENDS, SEOMETAREL, SEOREDEF, SEOSUBCODF, SEOSUBCOTX, SMIMLOIO, SVERS, T002, T002C, T002T, T002TX, T002XT, T006, T006A, TADIR, TBTCO, TBTCP, TCURC, TCURR, TCURT, TCURV, TCURW, TDDAT, TFDIR, TFTIT, TLIBG, TMCEXCFS, TMDIR, TOBCT, TOBJ, TOBJT, TRDIR, TRDIRT, USER_ADDRP, USR01, USR21, V_CMP_JOIN, V_COMPPDIR_COMPIC, V_COMPPDIR_ELTDIR, V_ELTDIR_TXT, V_REP_JOIN, VARIT, VSEOCCLASS, WDY_APP_PROP_DEF, WDY_APP_PROP_DFT, WDY_APP_PROPERTY, WDY_APPLICATION, WDY_APPLICATIONT, WDY_CHIP_DEF, WDY_CHIP_DEFT, WDY_CHIP_PARAM, WDY_CHIP_PARAMT, WDY_CHIP_PORT, WDY_CHIP_PORTT, WDY_CHIP_TAG, WDY_COMPO_USAGE, WDY_COMPONENT, WDY_COMPONENTT, WDY_CONFIG_DATA, WDY_CONFIG_DATT, WDY_CONTROLLER, WDY_CONTROLLERT, WDY_CTLR_COMPO, WDY_CTLR_COMPOT, WDY_CTLR_EXC, WDY_CTLR_EXCT, WDY_CTLR_PARAM, WDY_CTLR_PARAMT, WDY_CTLR_USAGE, WDY_CTX_ATTRIB, WDY_CTX_NODE, WDY_INTF_IMPLM, WDY_IOBOUND_PLGT, WDY_IOBOUND_PLUG, WDY_PLUG_PARAM, WDY_PLUG_PARAMT, WDY_VIEW, Y*, Z*, Customer-Specific Tables

 S_USER_AGR - Authorizations: Role Check [T-AH32000600]

Authorizations field	Values
ACT_GROUP	*
ACTVT	03 Show


4.3 BC_C - Basis - Development Environment

 S_DEVELOP - ABAP Workbench [T-AH32000600]

Authorizations field	Values
ACTVT	03 Show
DEVCLASS	\$TMP, Y*, Z*, /customer namespace, if used>/*
OBJNAME	Y*, Z*, /customer namespace, if used>/*
OBJTYPE	PROG

Authorizations field	Values
P_GROUP	

4.4 RS - SAP BW/4HANA

 S_RS_ADSO - Data Warehouse Modeling - DataStore Object [T-AH32000600]

Authorizations field	Values
ACTVT	03 Show
RSINFOAREA	*
RSOADSONM	*
RSOADSOPAR	*

 S_RS_DTP - Data Warehouse Modeling - Data Transfer Process [T-AH32000600]

Authorizations field	Values
ACTVT	*
RSONDTPSRC	*
RSONDTPTGT	*
RSSTDTPSRC	*
RSSTDTPGT	*
RSTLDTPSRC	*
RSTLDTPGT	*

 S_RS_HCPR - Central CompositeProvider [T-AH32000600]

Authorizations field	Values
ACTVT	03 Show
RSHCPR	*
RSHCPROBJ	DATA, DEFINITION
RSINFOAREA	*

 S_RS_ODSV - Data Warehouse Modeling - Open ODS View [T-AH32000600]

Authorizations field	Values
ACTVT	03 Show
RSFBPNAME	*
RSFBPOBJ	DATA, DEFINITION
RSINFOAREA	*